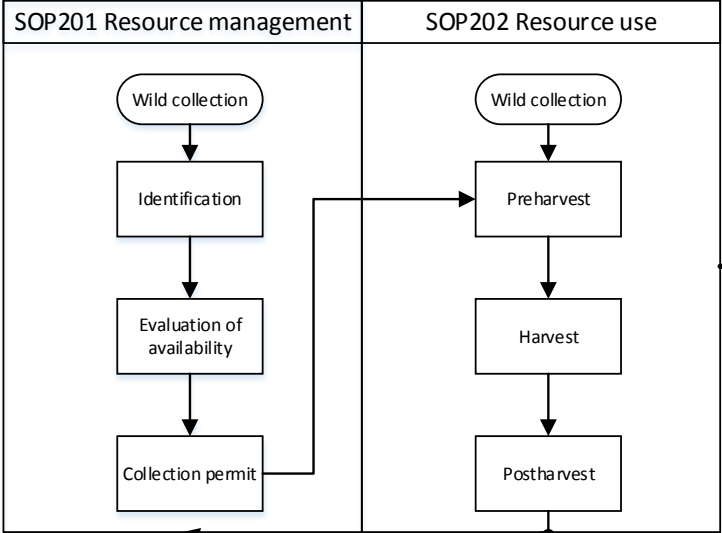


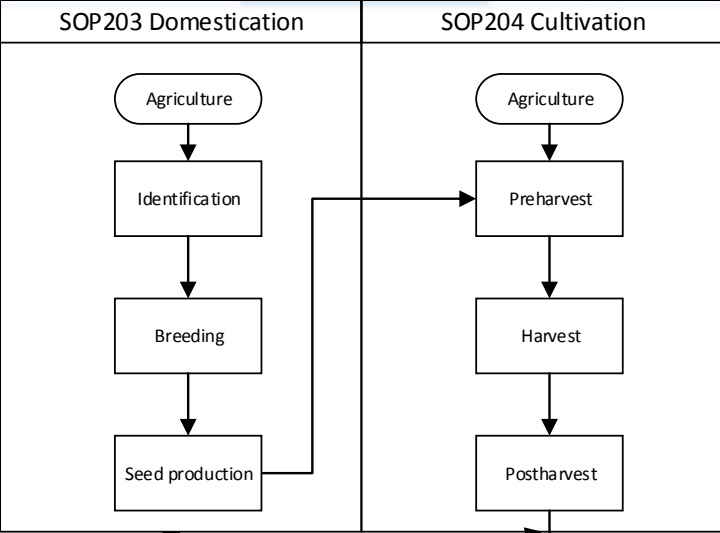
Context of Good Practices for sustainable sourcing of NWFPs from the viewpoint of resource management

Inputs for SOP203 Domestication, SOP204 Cultivation and SOP205 Supply chain management:

| | | |
|-------------------------|-----------|--|
| Personal and facilities | Equipment | Legal and ethical considerations (IPR, BS) |
|-------------------------|-----------|--|



From wild collection to agriculture



Implementation of GACP

